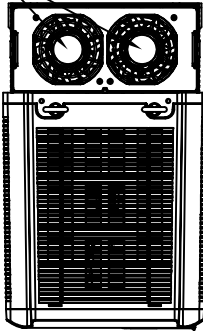
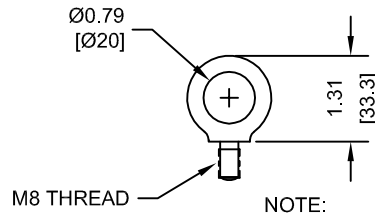


(2) EXTERNAL COOLING FANS

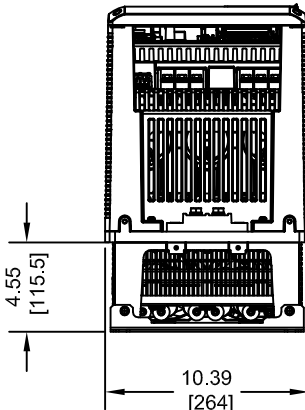
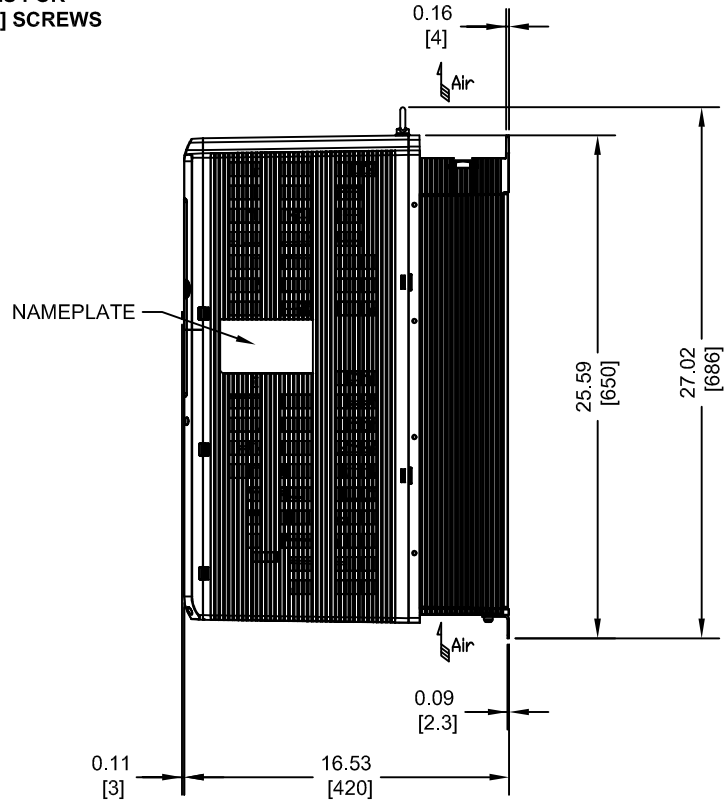
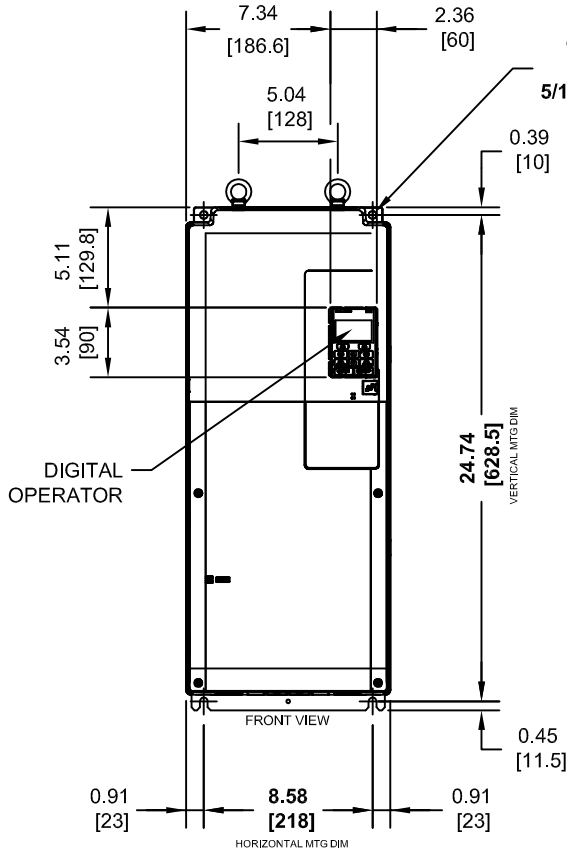


LIFTING AND EYEBOLT DETAILS



NOTE:
SPREADER BAR REQUIRED TO AVOID DAMAGE DURING LIFTING

(4)-MOUNTING HOLES FOR 5/16" [M8] SCREWS



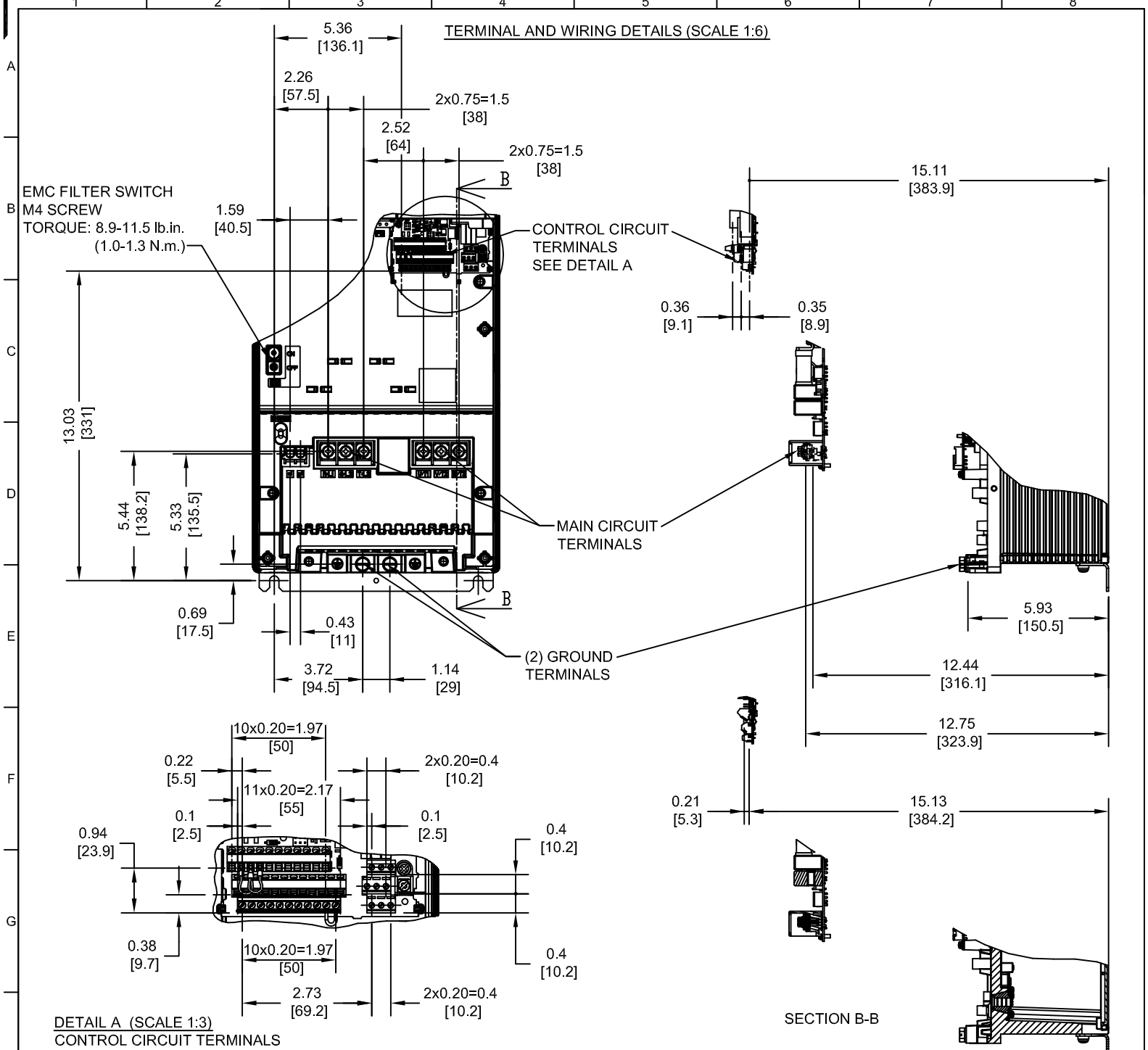
MODEL # CIMR-UU	VOLTAGE 3-PHASE (VAC)	OUTPUT CURRENT (A)		WEIGHT LBS (Kg)	WEIGHT WITH EMC FILTER LBS (Kg)	HEAT LOSS (W)					
		ND	HD			ND (Fc=4kHz)			HD (Fc=4kHz)		
						INT	EXT	TOT	INT	EXT	TOT
2Y0042AXX	200/240	42	28	70 (32)	73 (33)	168	854	1022	138	586	724
2Y0054AXX		54	42	70 (32)	73 (33)	195	1037	1232	168	808	976
2Y0068AXX		68	54	77 (35)	79 (36)	225	1295	1520	190	1016	1206
2Y0081AXX		81	68	77 (35)	79 (36)	238	1420	1658	208	1181	1389
4Y0040AXX	380/500*	40	34	70 (32)	73 (33)	174	877	1051	150	693	843
4Y0052AXX		52	40	70 (32)	73 (33)	209	1109	1318	178	855	1033
4Y0065AXX		65	52	77 (35)	79 (36)	240	1369	1609	204	1087	1291
4Y0077AXX		77	65	77 (35)	79 (36)	251	1479	1730	220	1238	1458

NOTES:
Y DENOTES A-Z
XX DENOTES AA-ZZ
* - FOR MODELS WITH INTEGRAL EMC FILTER,
VOLTAGE RATING IS 380/480.

INT=INTERNAL COMPONENTS
EXT=EXTERNAL HEATSINK
TOT=TOTAL

FOR ADDITIONAL DETAILS AND SPECIFICATIONS, CONSULT MANUAL

TOLERANCES / REFERENCES:			DRAWN: J. MATTAS CHECKED: J. PIOTROWSKI TECH: J. BORJA APPROVED: J. CAIRO ORIGINAL DESIGN: -	DATE: 10-30-14 DATE: 11-19-14 DATE: 11-20-14 DATE: 12-11-14 DATE: -	TITLE: U1000 DIMENSION DRAWING FRAME SIZE 2 IP00 ENCLOSURE 2A0042 - 2A0081, 4A0040 - 4A0077 SIZE: A REVISION: R01 PAGE: 1 of 3
UNITS: IN[mm]	SCALE: 1:10		THIS DOCUMENT AND INFORMATION CONTAINED IN IT ARE CONFIDENTIAL, AND CANNOT BE COPIED OR DISCLOSED IN WHOLE OR IN PART WITHOUT THE EXPRESS WRITTEN CONSENT OF YASKAWA AMERICA, INC.	DRAWING #: DD.U1K.FR2.IP00	



**TERMINAL AND WIRE SPECIFICATIONS FOR
MAIN CIRCUIT AND GROUND**

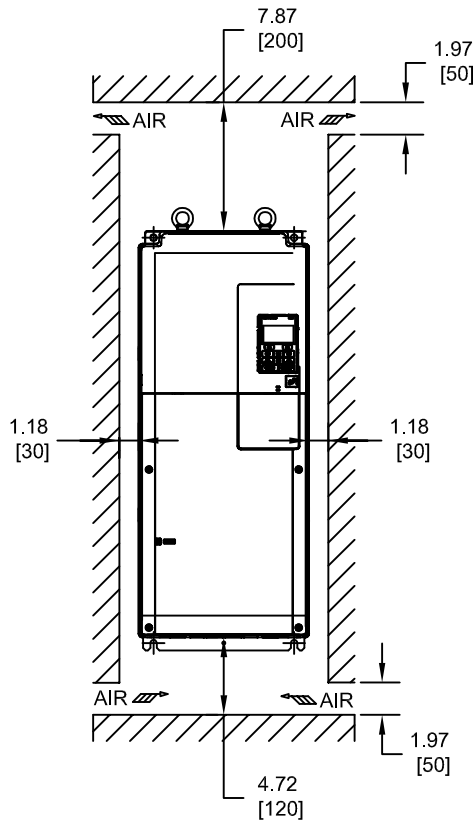
MODEL # CIMR-UU	TERMINAL SYMBOL	TERMINAL SCREW	CLAMPING TORQUE lb.in.(N.m.)	WIRE RANGE AWG(mm ²)
2A0042	R/L1, S/L2, T/L3	M6	35.4 TO 53.1 (4 TO 6)	10 TO 4 (6 TO 25)
2A0054	U/T1, V/T2, W/T3			
2A0068	p1, n1	M4	8.9 TO 12.4 (1 TO 1.4)	14 TO 12 (2.5 TO 4)
2A0081				
4A0040	⊕	M8	78.1 TO 95.5 (8.8 TO 10.8)	10 TO 4 (6 TO 25)
4A0052				
4A0065				
4A0077				

NOTE: REFER TO APPLICABLE CODES FOR PROPER WIRE TYPE AND SIZE

FOR ADDITIONAL DETAILS AND SPECIFICATIONS, CONSULT MANUAL

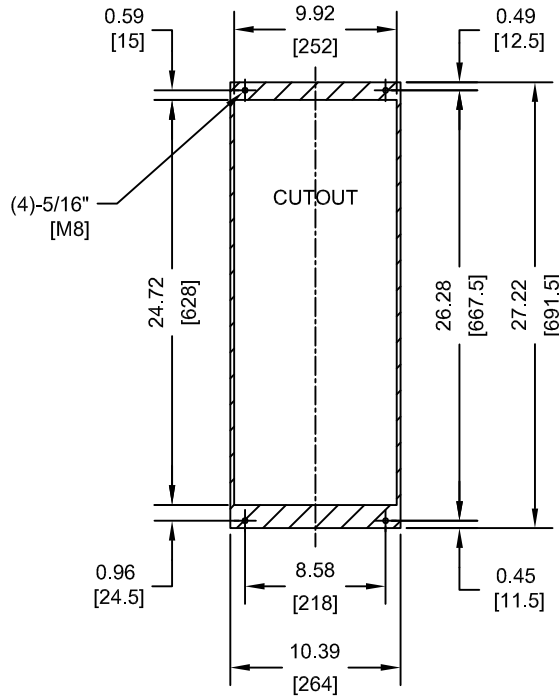
TOLERANCES / REFERENCES:			DRAWN: J. MATTAS	DATE: 10-30-14	TITLE: U1000 DIMENSION DRAWING FRAME SIZE 2 IP00 ENCLOSURE 2A0042 - 2A0081, 4A0040 - 4A0077
			CHECKED: J. PIOTROWSKI	DATE: 11-19-14	
		THIS DOCUMENT AND INFORMATION CONTAINED IN IT ARE CONFIDENTIAL, AND CANNOT BE COPIED OR DISCLOSED IN WHOLE OR IN PART WITHOUT THE EXPRESS WRITTEN CONSENT OF YASKAWA AMERICA, INC.	TECH: J. BORJA	DATE: 11-20-14	SIZE: A REVISION: R01 PAGE: 2 of 3
UNITS: IN[mm]	SCALE: BY VIEW		APPROVED: J. CAIRO	DATE: 12-11-14	

MINIMUM INSTALLATION CLEARANCES (SCALE 1:12)



NOTE:
FOR SIDE-BY-SIDE MOUNTING
CONSULT MANUAL

PANEL CUTOUT FOR EXTERNAL HEATSINK
MOUNTING CONFIGURATION (SCALE 1:12)



- NOTES:
- EXTERNAL HEATSINK CONFIGURATION REQUIRES MOUNTING KIT
 - EXPOSED HEATSINK RECOMMENDED CLEARANCE D=5.12"

FOR ADDITIONAL DETAILS AND SPECIFICATIONS, CONSULT MANUAL

TOLERANCES / REFERENCES:			DRAWN: J. MATTAS	DATE: 10-30-14	TITLE: U1000 DIMENSION DRAWING		
			CHECKED: J. PIOTROWSKI	DATE: 11-19-14	FRAME SIZE 2 IP00 ENCLOSURE		
		THIS DOCUMENT AND INFORMATION CONTAINED IN IT ARE CONFIDENTIAL, AND CANNOT BE COPIED OR DISCLOSED IN WHOLE OR IN PART WITHOUT THE EXPRESS WRITTEN CONSENT OF YASKAWA AMERICA, INC.			TECH: J. BORJA	DATE: 11-20-14	2A0042 - 2A0081, 4A0040 - 4A0077
UNITS: IN[mm]	SCALE: BY VIEW	APPROVED: J. CAIRO		DATE: 12-11-14	SIZE: A	REVISION: R01	PAGE: 3 of 3
		ORIGINAL DESIGN: -		DATE: -	DRAWING #: DD.U1K.FR2.IP00		